

609-396-5004

cm-autoparts.com



October



2023



Trenton

Windsor

Sayreville

Freehold

Check out our brake line-up and pick your flavor!



POWERSTOP



NuGeon

DURAGO



GEOSPEC COATED BRAKE ROTORS

In stock all locations!

- ◆ Processed and shipped dry, ready to install– no additional preparation, saves time
- ◆ Engineered with premium G3000/G11H18 iron castings for strength and durability
- ◆ Original Equipment (OE) vane configuration ensures maximum heat distribution
- ◆ 100% precision mill-balanced for smoother stopping and zero vibration at any speed
- ◆ Non-directional finish to promote faster break-in and smoother stops
- ◆ Designed to meet the same form, fit, and function as OEM brake rotors



POWERSTOP

ROTORS



Stocked in Trenton– available on hourly shuttles

Evolution Geomet Coated Rotors

- ◆ Genuine Geomet coating
- ◆ Excellent anticorrosion protection
- ◆ Looks great for open aluminum alloy wheels
- ◆ Competitively priced

Evolution Performance Drilled & Slotted Rotors

- ◆ Beveled & precision drill holes keep rotor temperatures down
- ◆ Rounded slots keep clear contact between pad & rotor
- ◆ Silver Zinc plated helps shield & resist rust
- ◆ Top #s in stock Trenton
- ◆ Special order two day shipping price \$20

Experience the Difference



Quality People

Quality Parts

Quality Service

Quality Partnership

DURAGO®

BRAKE ROTORS

Titanium Painted Rotors

- ◆ Coated hat & edge for improved corrosion protection
- ◆ 120 hours salt spray protection
- ◆ Engineered to meet all requirements of Fit, Form & Function
- ◆ Non-directional Finish for improved brake pad bedding



In stock all locations!



Premium Electrophoretic Coated Rotors

Stocked in Trenton—
available on hourly shuttles



Unpainted Rotors

In stock all locations!



Semi-Loaded Calipers by NuGeon®

- ◆ Coated Caliper Program
 - OEM color matched e-coated calipers
 - Fully coated Techshield 360 E-coating rust prevention process
- ◆ Installation Ready— all components and hardware included
- ◆ Highest Quality at a Great Value
 - Pressure testing— every caliper
 - Bracket slide testing— optimal performance
 - OE matched pistons ensures even heat distribution



Your Source for Fluid Line Repair Kits & Specialty Tools



BR-EZ14
1/4" Brake
Line Kit
\$99.14



BR-EZ316
3/16" Brake
Line Kit
\$129.99



BTB5K
Brake Tool Asst
\$149.99



PFT409
Pistol Grip
Flaring Tool
\$299.99



BR-EZ100-5
Ultrabend tubing 50'
\$94.99

Replacement fittings and adapters in stock to replenish kits!

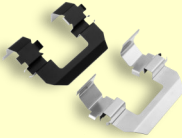


Dynamic Friction Company

BRAKE PADS

DFC premium hardware is sold separately— upgrade to DFC quality hardware as needed!

Teflon coating, vulcanized rubber & stainless steel



5000 Series Advanced Premium Brake Pads

Most exclusive brake pad in the aftermarket!



3000 Premium Ceramic and Semi-Metallic Formulation Brake Pads



MOFO (Maximum Operating Friction for Off-Roading) Ultimate Duty Performance Pads



Check out Dynamic Friction Company on You Tube for informative videos



POWERSTOP®

BRAKE PADS

Z17 Evolution Plus Ceramic Disc Brake Pads



- ◆ Low Dust Formula
- ◆ Noise Free
- ◆ Premium Stainless Steel Hardware included

Z36 Extreme Severe-Duty Truck & Tow Carbon & Ceramic Formula Brake Pads



Next Gen Super Premium Euro, Luxury & Performance Passenger Car Upgrades Carbon & Ceramic Formula Brake Pads



On Sale!



Z37 Top Cop Severe-Duty Demanding Fleet Applications Carbon & Ceramic Formula Brake Pads





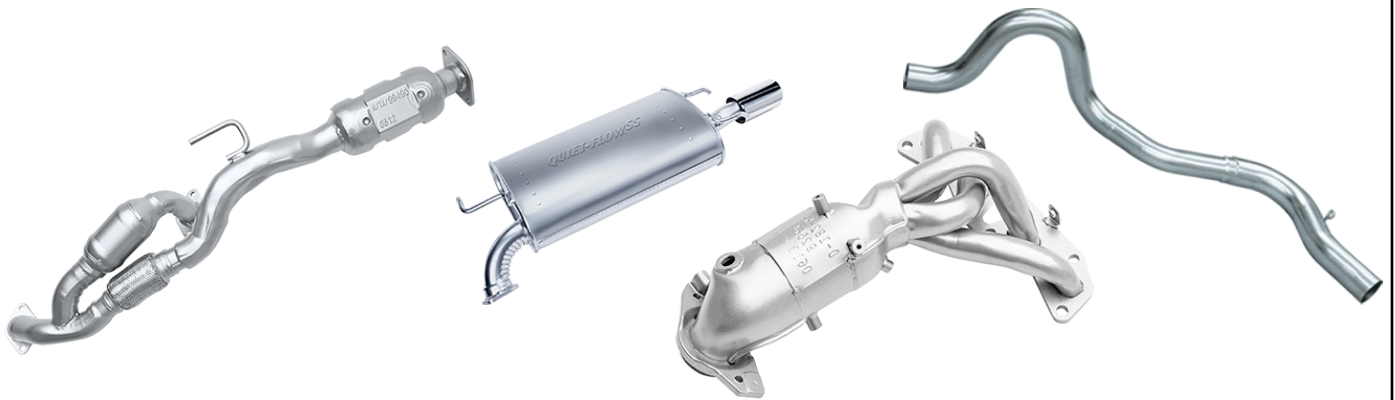
C&M Auto Parts
610 Plum Street
Trenton, NJ 08638

PRSR STD
US POSTAGE PAID
TRENTON, NJ
PERMIT 386

Or current resident



WALKER Exhaust Systems



- ◆ Available All Locations
- ◆ Full System Coverage & Precision Fit
- ◆ Manufactured & Assembled in USA & OE Supplier
- ◆ Ultra Direct Fit Converters-EPA Compliant with optimal precious metal load for problematic vehicles
- ◆ CALCAT Converters-CARB compliant (CA, NY & CO)

Expansive inventory!



Excellent OE Quality hose at an exceptional price!



500+ new skus!

- Power Steering Hose
- Power Steering/Return Hose Assemblies
- Brake Hose Assemblies
- Oil Cooler & Transmission Lines